

2038ZDF/2040ZDF $\varnothing 20.3\text{mm} \times 38.3/40\text{mm}$

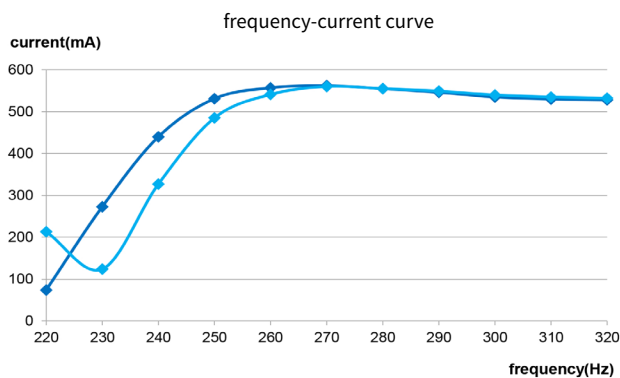
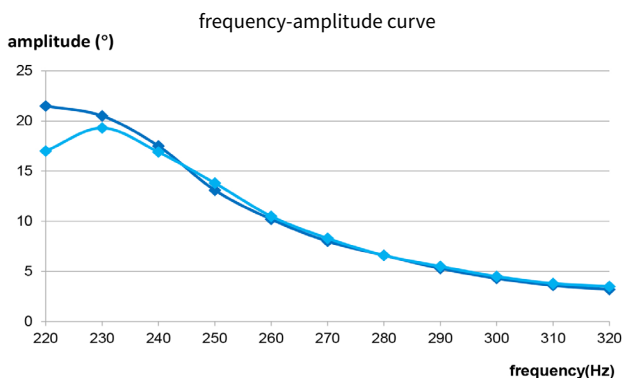
应用领域：电动牙刷、保健器材、清洁用具等领域。

Applications: electric toothbrush, health care equipment, cleaning equipment, etc.

			-BW-3-L4-3.7	-ET-L4-3.7	2040ZDF-3-L1-3.7
电机参数 / Motor Data					
1	电压	Voltage	V	3.7	3.7
2	直流电阻	Resistance	Ω	3.2	3.2
3	工作频率范围	Operating frequency range	Hz	230~330	220~320
4	空载振动频次	No-load vibration frequency	Times/minute	34800	34800
5	空载振动电流	No-load current	mA	90	95
6	启动转矩	Starting torque	mNm	22	22
7	启动电流	Starting current	A	1.15	1.15
8	负载 (刷头)	Rated load (Brush head)	g	4.4	4.4
9	负载振动频次	Load vibration frequency	Times/minute	31000	31000
10	负载电流	Load current	mA	400	450
11	转子惯量	Rotor inertia	gcm^2	2.4	2.4
12	重量	Weight	g	31	31
13	工作温度范围	Operating temperature range	$^{\circ}\text{C}$	-10~+60	-10~+60

特性曲线 / Characteristics Curve

2038ZDF-BW-3-L4-3.7



仅供参考，详细了解请以产品规格书为准。
For reference only, please refer to the product specification.

◆ Load brush head ◆ Load brush head+2N

可选配置 / Options

性能 Special coils: 连续运行范围内可定制 customizable in continuous operation range

法兰 Flange: 标准前后法兰 standard front and rear flanges / 定制法兰 custom flanges

轴 Shaft: 长度 length / 异形 shape

电气连接 Electrical connection: 端子或导线 connector or wire / 导线长度 lead wires length

外观图 / Outline Drawing

