

1840ZDT $\varnothing 18.3\text{mm} \times 40.05\text{mm}$

应用领域：电动牙刷、保健器材、清洁用具等领域。

Applications: electric toothbrush, health care equipment, cleaning equipment, etc.

-2-L202-30-3.7 -3T-L212-35-3.7 -1-L1-30-3.7

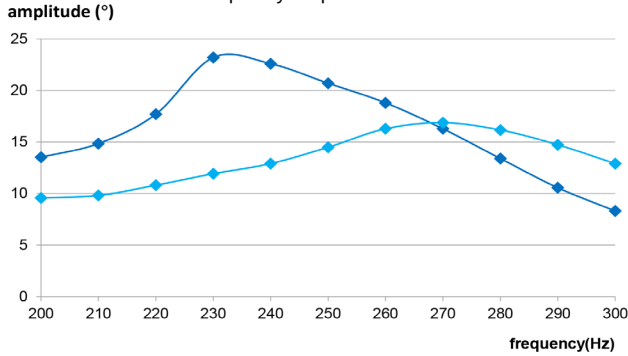
电机参数 / Motor Data

序号	中文	英文	单位	-2-L202-30-3.7	-3T-L212-35-3.7	-1-L1-30-3.7
1	电压	Voltage	V	3.7	3.7	3.7
2	直流电阻	Resistance	Ω	8	5.1	3.1
3	工作频率范围	Operating frequency range	Hz	200~400	200~400	200~400
4	空载振动频次	No-load vibration frequency	Times/minute	45600	43200	45600
5	空载振动电流	No-load current	mA	55	70	105
6	启动转矩	Starting torque	mNm	19	21	22
7	启动电流	Starting current	A	0.8	0.9	1
8	负载 (刷头)	Rated load (Brush head)	g	4.2	3.5	4.5
9	负载振动频次	Load vibration frequency	Times/minute	33600	34800	33000
10	负载电流	Load current	mA	240	400	480
11	转子惯量	Rotor inertia	gcm^2	0.27	0.47	0.26
12	重量	Weight	g	25	27	27
13	工作温度范围	Operating temperature range	$^{\circ}\text{C}$	-10~+60	-10~+60	-10~+60

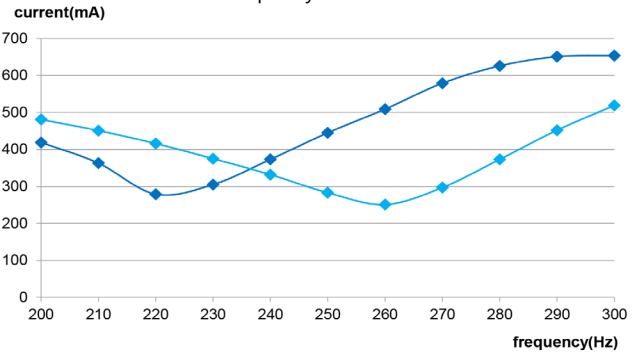
特性曲线 / Characteristics Curve

1840ZDT-3T-L212-35-3.7

frequency-amplitude curve



frequency-current curve



仅供参考，详细了解请以产品规格书为准。
For reference only, please refer to the product specification.

◆ Load brush head ◆ Load brush head+2N

可选配置 / Options

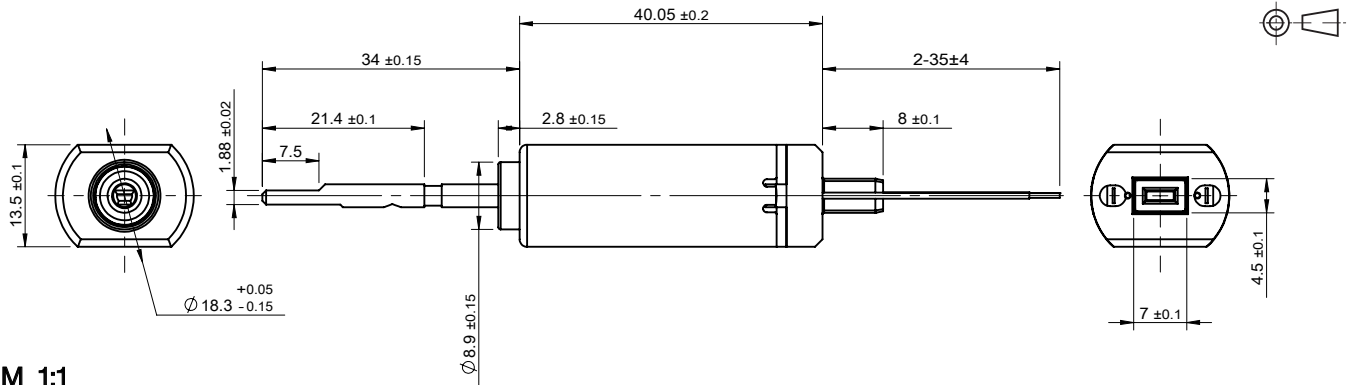
性能 Special coils: 连续运行范围内可定制 customizable in continuous operation range

法兰 Flange: 标准前后法兰 standard front and rear flanges / 定制法兰 custom flanges

轴 Shaft: 长度 length / 异形 shape

电气连接 Electrical connection: 端子或导线 connector or wire / 导线长度 lead wires length

外观图 / Outline Drawing



M 1:1