

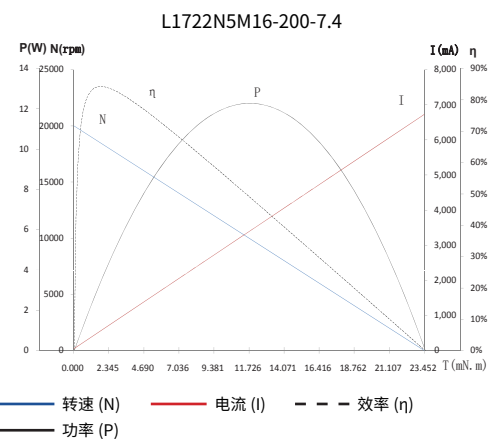
L1722N5M $\varnothing 17.4\text{mm} \times 22.1\text{mm}$, 贵金属电刷 Precious Metal Brushes

应用领域: 微型无人机、智能电玩、小家电产品等领域。

Applications: mini UAV's, remote control hobby products, small household appliances, etc.

				16-200-7.4	08-218-7.4	11-270-12.0
电机参数 / Motor Data						
1	电压	Voltage	V	7.4	7.4	12.0
2	端电阻	Terminal resistance	Ω	1.1	1.2	1.8
3	空载转速	No-load speed	rpm	20000	21800	27000
4	空载电流	No-load current	mA	45	40	50
5	堵转转矩	Stall torque	mNm	23.5	19.7	27.9
6	堵转电流	Stall current	mA	6730	6170	6670
7	负载转矩	Load torque	mNm	1	2	2
8	负载转速	Load speed	rpm	19150	19590	25060
9	负载电流	Load current	mA	330	660	520
10	最大输出功率	Max. output power	W	12.3	11.3	19.7
11	最大效率	Max. efficiency	%	84	85	84
12	反电势常数	Back-EMF constant	mV/rpm	0.4	0.3	0.4
13	转矩常数	Torque constant	mNm/A	3.5	3.2	4.2
14	转速 / 转矩斜率	Speed/torque gradient	rpm/mNm	850	1100	970
15	转子惯量	Rotor inertia	gcm^2	0.8	0.8	0.8
16	重量	Weight	g	24.5	24.5	24.5
17	工作温度范围	Operating temperature range	$^{\circ}\text{C}$	-20~+85		

特性曲线 / Characteristics Curve

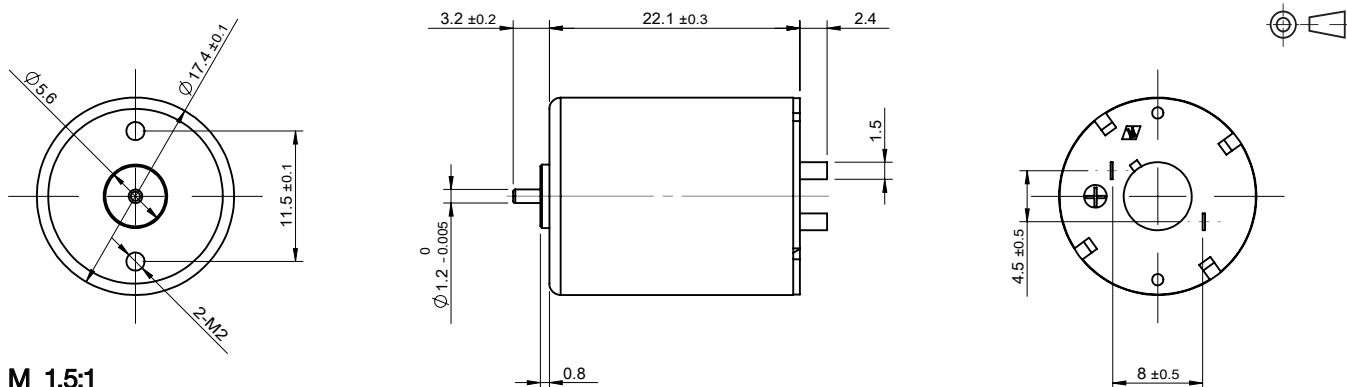


仅供参考, 详细了解请以产品规格书为准。
For reference only, please refer to the product specification.

可选配置 / Options

- 性能 Special coils: 连续运行范围内可定制 customizable in continuous operation range
- 法兰 Flange: 标准前后法兰 standard front and rear flanges / 定制法兰 custom flanges
- 轴 Shaft: 长度 length / 异形 shape
- 电气连接 Electrical connection: 端子或导线 connector or wire / 导线长度 lead wires length

外观图 / Outline Drawing



规格如有变更, 恕不另行通知。Specification subject to change without notice.

精密直流空心杯电机
PRECISION DC CORELESS MOTOR

无刷电机
BRUSHLESS DC MOTOR

驱动器
CONTROLLER

精密齿轮减速电机
PRECISION GEAR MOTOR

精密伺服电机
PRECISION SERVO MOTOR

直流空心杯电机
DC CORELESS MOTOR

直流铁芯电机
DC CORE MOTOR

声波振动电机
SONIC MOTOR

全球营销网络
GLOBAL MARKETING NETWORK