

BO6452N3B $\varnothing 64\text{mm} \times 52\text{mm}$, 外转子无传感器 Outer Rotor, Sensorless

应用领域: 无人机、电动工具、自动化设备、智能家居等驱动领域。

Applications: UAV, electrical tools, automation equipment, smart home, etc.

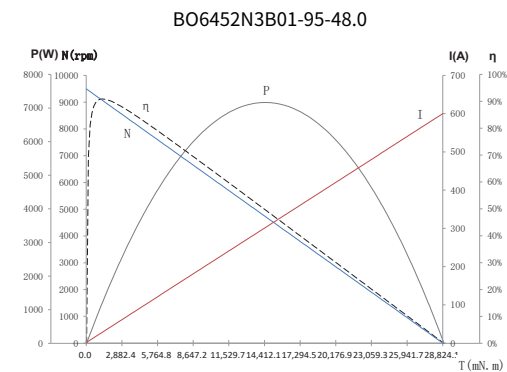
	03-95-24.0	02-95-36.0	01-95-48.0
--	------------	------------	------------

电机参数 / Motor Data			
1 电压	Voltage	V	24.0
2 端电阻	Terminal resistance	Ω	0.02
3 空载转速	No-load speed	rpm	9500
4 空载电流	No-load current	A	2.6
5 堵转转矩	Stall torque	mNm	28824
6 堵转电流	Stall current	A	1200
7 额定转矩	Nominal torque	mNm	985
8 额定转速	Nominal speed	rpm	7400
9 额定电流	Nominal current	A	37
10 最大输出功率	Max. output power	W	7165
11 最大效率	Max. efficiency	%	90.9
12 反电势常数	Back-EMF constant	mV/rpm	2.5
13 转矩常数	Torque constant	mNm/A	24.1
14 KV 值	KV Value	rpm/V	396
15 转速 / 转矩斜率	Speed/torque gradient	rpm/mNm	0.33
16 转子惯量	Rotor inertia	gcm^2	1750
17 重量	Weight	g	625

热参数 / Thermal Data		特性曲线 / Characteristics Curve	
18 热阻 (机壳 - 环境)	Thermal resistance housing-ambient	K/W	0.58
19 热阻 (线圈 - 机壳)	Thermal resistance winding-housing	K/W	0.19
20 热时常数 (电机)	Thermal time constant motor	s	180
21 热时常数 (线圈)	Thermal time constant winding	s	60
22 工作温度范围	Operating temperature range	$^{\circ}\text{C}$	-40~+120
23 绕组耐温等级	Thermal class of winding	$^{\circ}\text{C}$	180

机械参数 / Mechanical Data			
24 轴向间隙	Axial play	mm	0.012
25 径向间隙	Radial play	mm	0.008
26 动态轴向载荷	Axial load dynamic	N	12
27 静态轴向载荷	Axial load static	N	235
28 径向载荷 (距安装面 3mm)	Radial load at 3 mm from mounting face	N	146

其它参数 / Other Specifications			
29 极对数	No. of pole pairs		4
30 滚珠轴承	Ball bearings		3
31 换向结构	Commutation structure	sensorless	
32 防护等级	Protection class	IP20	



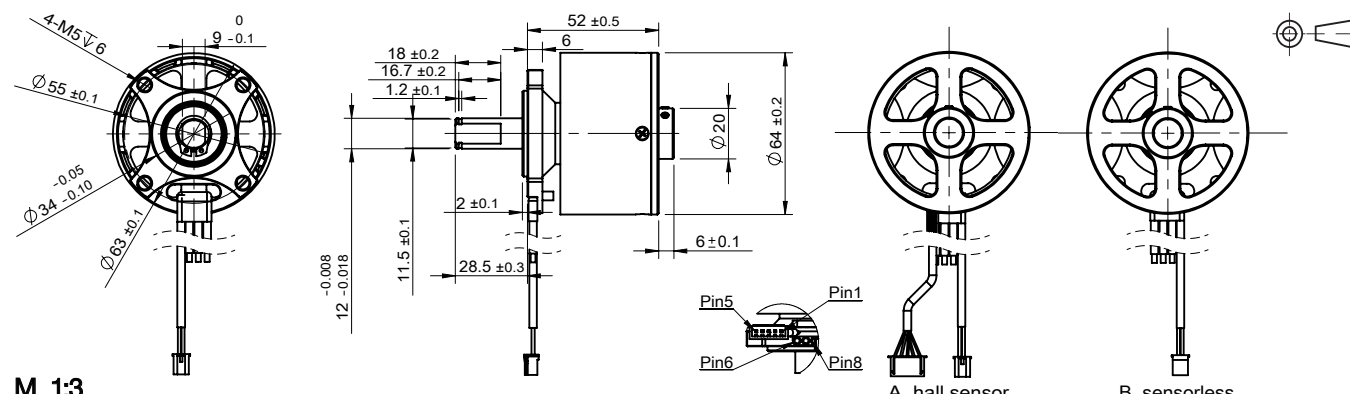
仅供参考, 详细了解请以产品规格书为准。
For reference only, please refer to the product specification.

可选配置 / Options 端子定义 / Connection

性能 Special coils: 连续运行范围内可定制 customizable in continuous operation range
 编码器 Encoder / 驱动器 Driver: 可定制 customizable upon request
 法兰 Flange: 标准前后法兰 standard front and rear flanges / 定制法兰 custom flanges
 轴 Shaft: 长度 length / 异形 shape
 轴承类型 Bearing type: 含油轴承 sleeve bearings / 滚珠轴承 ball bearings
 电气连接 Electrical connection: 端子或导线 connector or wire / 导线长度 lead wires length

A 霍尔传感器 / hall sensor AWG 24/AWG 14		B 无传感器 / sensorless AWG 14	
Pin1	H- black	Pin1	U black
Pin2	Hw yellow	Pin2	V yellow
Pin3	Hv white	Pin3	W red
Pin4	Hu blue		
Pin5	H+ red		
Pin6	U black		
Pin7	V yellow		
Pin8	W red		

外观图 / Outline Drawing



规格如有变更, 恕不另行通知。Specification subject to change without notice.

www.constarmotor.com